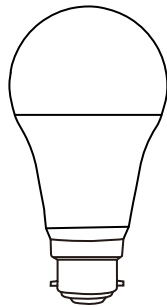




User Manual

Matter Smart Bulb A60



Function Introduction

- Remote Control
- Smart Dimming
- Voice Control
- RGBWW

Installation Instructions

- After installing the bulb, power on the bulb.
- The bulb will be breathing with warm white (with a brightness range between 100%-80%), which means it has already entered the Pairing mode and is ready to be connected to the network.

Set Up Your Device via Matter

Malli bulb is a Matter-certified device. You can integrate it into any Matter ecosystem you prefer for easy control. As IoT manufacturers are working to optimize the user experience of Matter setup, the setup process and user experience should improve over time. Take Alexa, Google, and Apple ecosystems, for example, and the following shows you how to set up via Matter:

Note:

- The Matter setup code can only be used to add the device to the first ecosystem. For the second commissioning, you will need to open the app of the first ecosystem to generate a new setup code.
- A Matter hub (i.e., controller) and smart home app of the same ecosystem are required.

Add To Alexa Via Matter

Before you start:

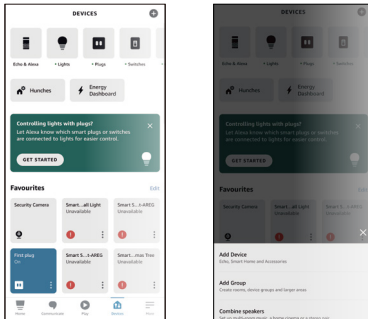
Since Alexa's setup is temporarily limited, make sure Alexa is the first matter ecosystem when adding your matter-certified devices to Alexa. If you are unsure, please factory reset your device before setup.

1. Check Compatibility

- Alexa app version: 2.2.491118.0 or later

2. How to Set Up Your Matter Bulb

- Launch the Alexa app and go to the Devices page.
- Tap + and then tap Add device to add a new device.

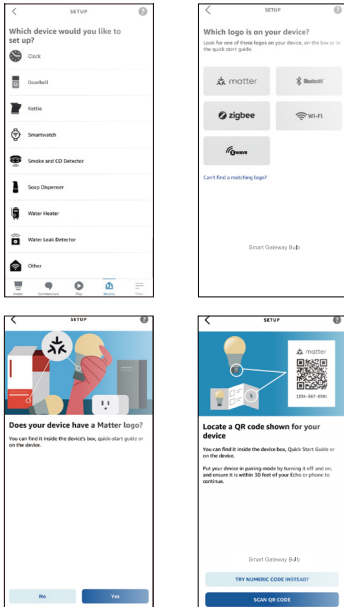


c. Choose Other and then tap the Matter icon.

d. Tap Yes on the confirming page.

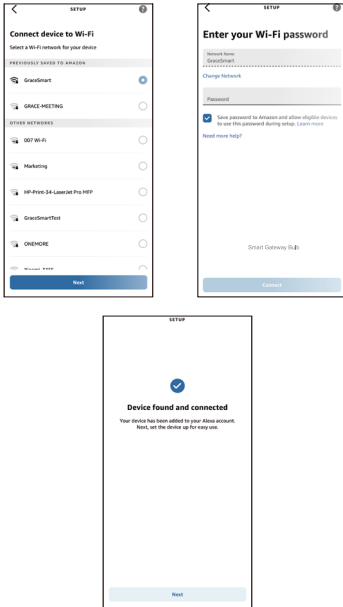
e. Tap Scan QR Code and scan the QR Code.

Alternatively, you can tap Try Numeric Code Instead? to enter the numeric setup code that comes with your device.



f. Wait for your device to set up, then choose the Wi-Fi you want your device to connect to and enter the corresponding Wi-Fi password.

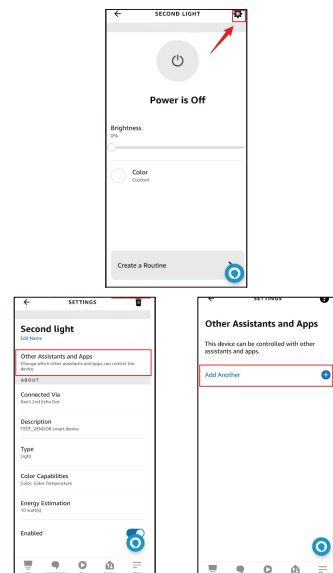
g. Tap Done. Now, you can find your device on the Device list and use your voice to control your device.



3. How to Integrate Your Device into Another Ecosystem

As the setup code can only be used to add the device to the first ecosystem, for the second commissioning, you need to open the app of the first ecosystem to generate a new setup code.

- Launch your Alexa and go to the device Settings page.
- Tap Other Assistants and Apps and then tap Add Another to create an 11-digit setup code.



c. Copy the setup code. Launch the app of the second ecosystem. Follow the setup instructions to enter the setup code and the app instructions to complete the setup.



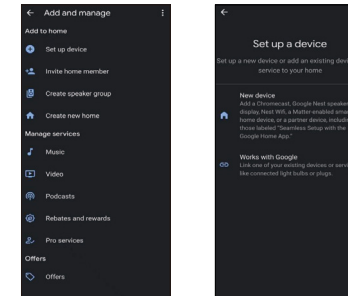
Add to Google via Matter

1. Check Compatibility

- Google Home App: 2.62.1.15 or later

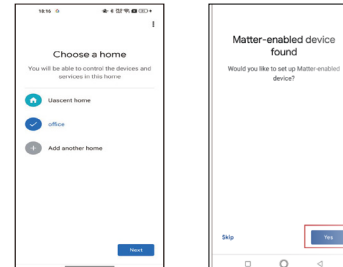
2. How to Set Up Your Matter Device

- Launch your Google Home App and tap +.
- Choose Setup device and tap add a new device.

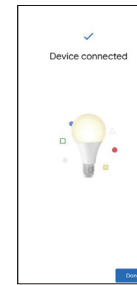


c. Choose Matter and tap Yes on the confirming page.

d. Scan the setup QR code on your device. If your device comes without a QR code but a numeric code, you can tap Set up without QR code and enter the numeric code.



e. Tap Done when the device is connected.



3. How to Integrate Your Device into Another Ecosystem

As the setup code can only be used to add the device to the first ecosystem, for the second commissioning, you need to go to the app of the first ecosystem to generate a new setup code.

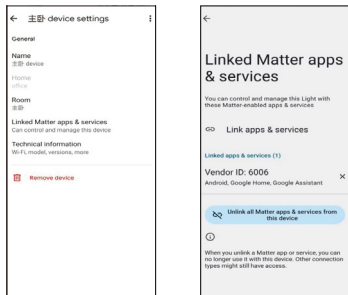
- Launch your Google Home app. Tap the gear button to go to the device settings page.



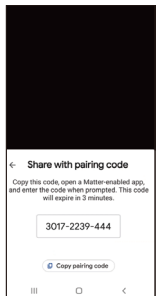
b. Tap Linked Matter apps & service and then tap Link apps & services to create an 11-digit setup code.

c. Tap Use pairing code.

If conditions permit, you can alternatively tap Share with QR code, and you should use the other mobile device to scan the newly- created pairing QR code.



d. Tap Copy pairing code to copy the new code.



e. Copy the setup code. Launch the app of the second ecosystem. Follow the setup instructions to enter the setup code and the app instructions to complete the setup.



Add to Apple via Matter

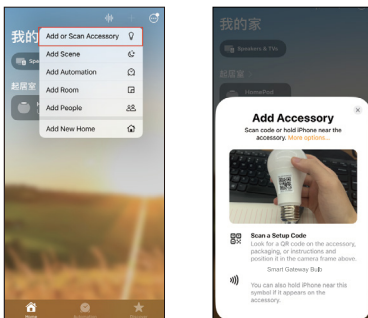
1. Check Compatibility

- iOS system: Version 16.2 or later.
- Matter-supported Controller: Home Pod, Home Pod mini, or Apple TV.

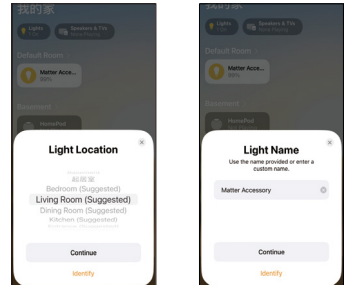
Note: Please update your iOS devices to iOS 16.2 or later. It is recommended to update your iOS to the latest version for the best experience.

2. How to Set Up Your Matter Device

- Launch your Home App. Tap + and then tap Add or Scan Accessory to add a new device.
- Scan the setup QR code on your device.



c. Choose a location for your device and give it a name.



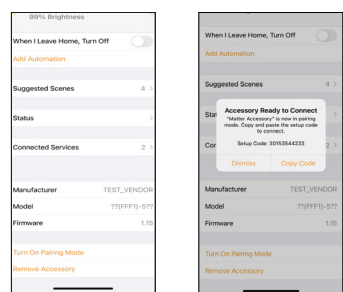
3. How to Integrate Your Device into Another Ecosystem

The setup code can only be used once to add the device to another ecosystem; that is, for the second commissioning, you need to go to the app of the first ecosystem to generate a new setup code.

- Launch your Home app and go to the Device Setting page.



b. Scroll down, tap Turn On Pairing Mode and then Copy Code.



4. Copy the setup code. Launch the app of the second ecosystem. Follow the setup instructions to enter the setup code, and follow the app instructions to complete the setup.



TECHNICAL SPECIFICATION

Input ratings : AC220-240V, 50/60Hz

Base : B22 | Power : 9W | Luminous Flux : 806lm

Colour : 3000K-6500K+RGB | Ra : >80 | PF:>0.5

Power Standby : <0.5W | Lifespan : 20000H

Beam Angle : 200° | Product Size : Ø60*115mm

Wi-Fi Protocol : 2.4GHz | Wi-Fi Standard : IEEE 802.11 b/g/n

Bluetooth Protocol : 5.2 | Bluetooth Standard : IEEE 802.15.1

Working Temperature : -10°C -40°C | Max Working Humidity : 80%

Model : MALLI01CA60-B22

Failed to Setup via Matter?

Refer to the following and you can resolve most setup issues.

- Make sure the firmware of your Matter hub and Smart Home App is updated to support Matter.
- Ensure your phone and Matter hub are connected to a stable 2.4 GHz Wi-Fi network and have internet access during the setup process.
- Ensure the bulb is in pairing mode. Power cycle the bulb to reset and enter pairing mode.



IMPORTANT INFORMATION

- Please carefully review the safety information provided in this document and keep it for future reference. For the latest update and any assistance or customer support, you may access the resources available at www.samraj.tech/support.
- Please note that the Malli smart bulb should be operated in accordance with the guidelines and cautions provided with the product. It is not recommended to use the bulb in environments that restrict airflow or trap heat, leading to temperatures exceeding 40°C. Malli bulbs should not be used outdoors regardless of weather conditions or in wet or damp surroundings. It should not be used in areas not certified for sale.
- Malli bulbs should not be used as part of Emergency Lighting system including for Emergency exits.
- Please ensure that you follow all operating guidelines and cautions to ensure safe and proper use of the Malli smart bulb.
- Malli bulbs should not be connected to trailing edge, leading edge or other electronic/electrical dimmer switches; only Matter switches and software based (app, voice, automation) dimming should be used to control the brightness.
- Please do not attempt to open or disassemble the device, as doing so will void the warranty and pose safety risks. It is imperative to follow all handling instructions provided with the product to ensure safe and proper use.
- Do not clean the device when it is connected to power. Do not clean the device with liquids or sprays. Instead, use a soft dry cloth and avoid harsh cleaning agents.

- Please ensure that you follow the national and local regulations for WEEE recycling when disposing of the product. This will help ensure that the product is recycled in an environmentally responsible manner.
- For the UKCA, CE and RoHS Declaration of conformity certificates visit www.samraj.tech/malli/downloads

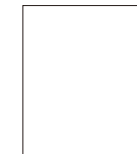
Warranty Information: The product comes with a limited one-year warranty covering defective hardware.

To get the most out of your Malli bulb visit www.samraj.tech/malli



Disclaimers: Smart Things, Google Assistant, Apple Home, Alexa are the intellectual property of Samsung Electronics Co Ltd, Google Alphabet Inc., Apple Inc., Amazon respectively. Samraj Tech or Malli explicitly disclaims any ownership rights to their names, logos or any other IP. These names are deployed solely to inform customers about the specific functionalities linked to these products. Samsung Electronics Co Ltd, Google Alphabet Inc., Apple Inc., Amazon are not responsible for the operation of this device or its compliance with safety and regulatory standards

Matter QR code



Samraj Technologies Limited
2nd Floor Lowry Mill, Lees Street
Manchester M27 6DB
United Kingdom

Website: www.samraj.tech
email: support@samraj.tech