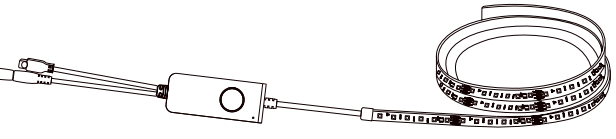


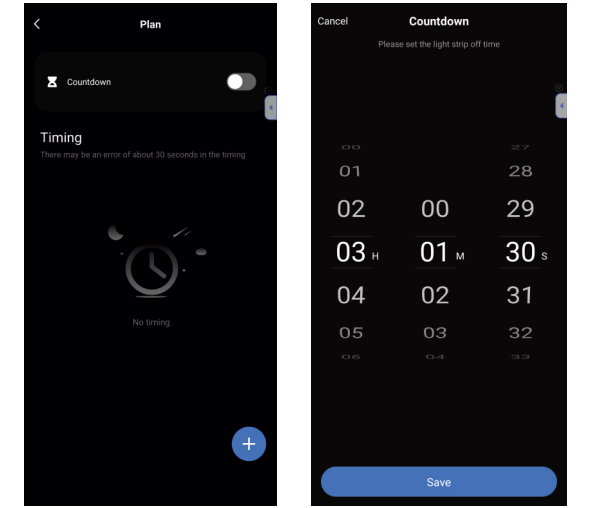


Smart RGBIC LED Strip Light

User Manual



4. Timer  
This will keep the Strip Light in the OFF position for a specific duration.

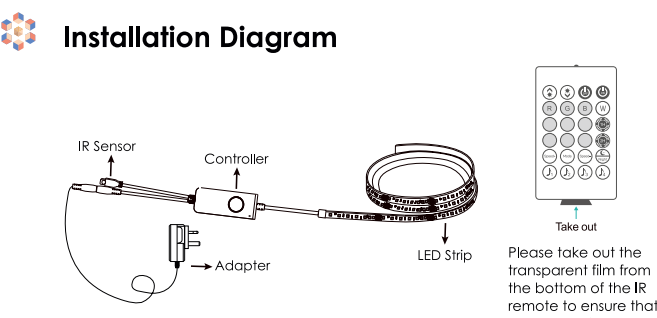
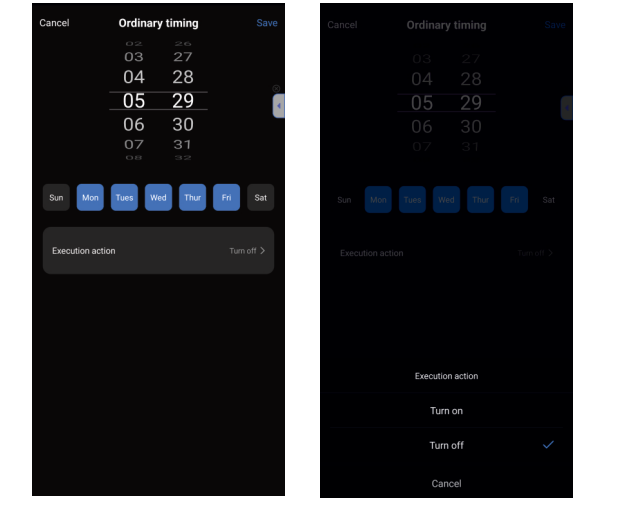


- Features**
- Wi-Fi & Bluetooth Connection
  - Timer & Schedule
  - Remote Control
  - Grouping
  - Easy to Setup
  - Voice Control
  - Dimmable
  - Sync with Music
  - Built-in Microphone
  - No Hub Required

**Parameters**

Model:	MALLIAURORA5M
Length:	5 M
Power:	5 W/m (24 V DC) Max
LED Type:	RGB5050, 60 LEDs/m
Controller:	Wi-Fi (2.4 Ghz) + IR Remote+ Bluetooth
Power Adapter:	24 V, 1 A (UK Plug)
Operating Temperature:	-10 °C to + 40 °C
Operating Humidity:	10%-80% RH (non-condensing)
IP Rating:	
LED Strip:	IP44
Power Adapter & Controller:	Ip20
Voice Support:	Google Assistant, Amazon Alexa

5. Schedule  
Tap "Plan", press the "+" button to set an ordinary time to turn the lights ON or OFF. By tapping "Execution action", you can choose the timer action – turn the lights ON/OFF.

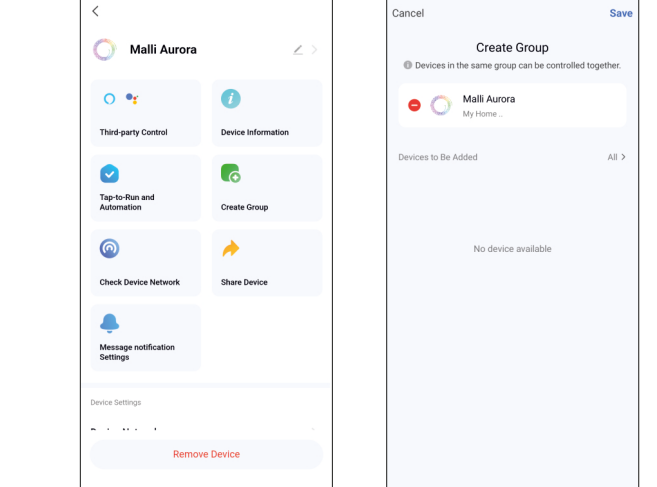


**Ways to Operation**

- (1) Manual Control by Button
- Built-in Microphone
- Short press: ON/OFF
- Long press: Reset
- Double click: Switch Mode
- (2) Remote Control
- Please point the remote control at the sensor on the receiver to control the light.

**Grouping**

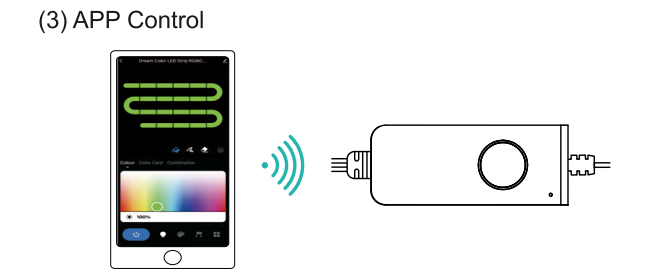
If you have two or more lights, tap " " in the app's upper right-hand corner and create a group. The smart lamp group will allow for synchronous switching, colour changes, scene mode selection, timer settings, etc.



**App Function Introduction**

Various features can be adjusted using the menu button " " in the app's upper right-hand corner.

- Device Name: Can be changed as desired.
- Device Information: Check the information about the Strip Light.
- Tap-to-Run and Automation: Check the Smart Automation linked to your device.



**IR Remote Controller 24-keys**

- 
- LED brightness adjustment button, increase sensitivity in music mode.
  - LED brightness adjustment button, decrease sensitivity in music mode.
  - OFF button.
  - ON button.
  - LED colour buttons (Red, Green, Blue, White 4 colours).
  - Static colour brightness adjustment.
  - Dynamic mode colour change speed (+).
  - In dynamic mode, the 20 modes change forwards or backwards in sequence, allowing you to find the colour or scene you prefer.
  - Dynamic mode colour change speed (-).
  - Enter Night Mode (10% brightness).
  - 4 Music modes.

4.Third-Party Control: Provides information about how to connect your device to Amazon Alexa and Google Assistant.

5.Offline Notification: Allows you to be alerted when your device is offline.

6.Add Members: Allows you to add members to control the device in the Share Device settings.

7.Create Group: Allows you to control another smart device at the same time.

8.FAQ & Feedback: Allows users to report issues and get help.

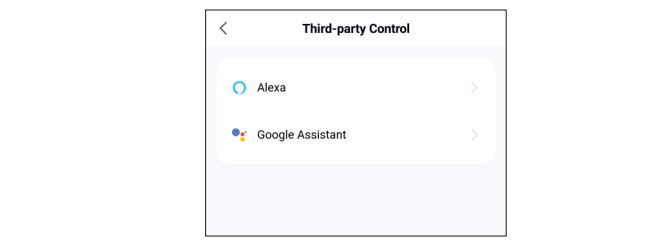
9.Add to Home Screen: Allows you to add the Smart Device to your smartphone's home screen.

10.Firmware Information: Allows you to check the software or install updates to the device.

11.Remove Device: Will remove the Smart Device from the app and delete pairing information. This is necessary if pairing with a new device. Restore Factory Defaults: Allows resetting the Smart Device to its factory settings.

**Third-Party Control**

- In the Smart Life app: Find more services in the "Me" menu, click to enter "Voice Service" (Alexa / Google Assistant) and other services.
- Click on the service you require. Connect to the third-party service device according to the operating guide.



For any product and app updates, please contact customer service.

**Surface Preparation**

- To ensure strong adhesion and long-term performance of the LED strip:
- Make sure the surface is clean, dry, and smooth
- Remove any dust, oil, or grease using a mild cleaner or rubbing alcohol
- Avoid textured, rough, or porous surfaces which may reduce adhesive strength
- Allow the surface to fully dry before applying the LED strip
- For best results, apply the strip at room temperature (above 10°C)

**Installation Instructions**

- Use only a DC 24V power supply (e.g., 24V 1A adapter)
- Secure the controller using the double sided adhesive strip
- Uncoll the LED strip before powering to prevent overheating
- Ensure correct cable connections to the controller
- Test the system via app before full installation

**Battery Information**

**CR2025 Button Cell**

This product contains a button cell battery (CR2025). Button batteries pose a serious health risk if swallowed or inserted into the body, particularly for young children.

**WARNING – KEEP OUT OF REACH OF CHILDREN**

Ingestion of a button battery can cause serious internal burns and lead to death in as little as 2 hours.

**What to do if a battery is swallowed or inserted**

- Immediately call your local emergency services.
- Take the patient to the nearest Accident & Emergency (A&E) department.
- Do not induce vomiting and do not eat or drink unless advised by a medical professional.

**Battery Compartment Safety**

- Ensure the battery compartment is securely closed after installation.
- If the battery compartment does not close securely, stop using the product and keep it away from children.

**Battery Replacement Instructions**

- Press the tab and slide out the battery compartment.
- Remove the used battery.
- Insert a new CR2025 battery, ensuring the "+" side faces up.
- Slide the compartment back into place and confirm it is securely closed.

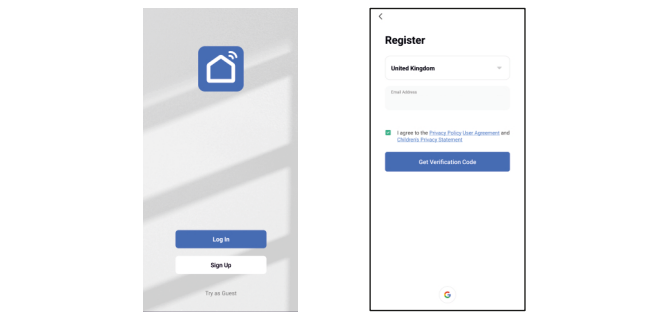
**App Download**

- Search for "Smart Life" in the App Store or Google Play Store.
- Scan the QR code from the label or user manual.



**Account Registration / Login**

Open the Smart Life app. Sign up for a new account or log in with an existing account.



**Battery Disposal Information**

- Do not dispose of used batteries in household waste.
- Dispose of batteries at approved collection or recycling points in accordance with local regulations.
- The battery and product are marked with the crossed-out wheeled bin symbol to indicate separate collection is required.

**Battery Type**

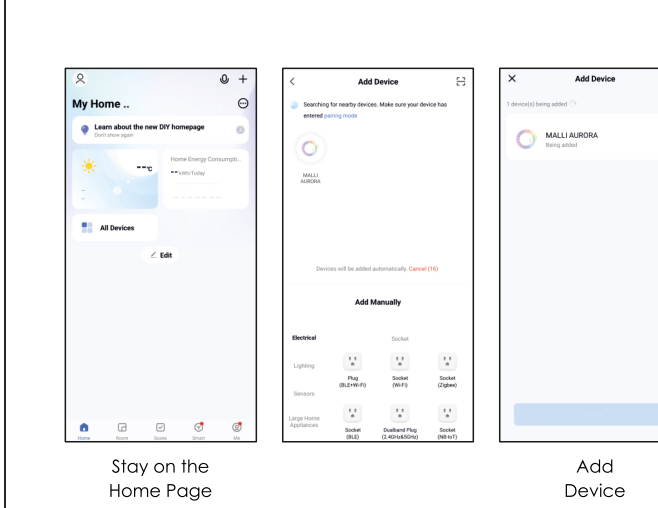
- Battery Type: CR2025 (3V lithium button cell)
- Number of batteries included: 1
- Estimated life: Varies based on usage; replace when remote responsiveness decreases

**Additional Safety Precautions**

- Keep all batteries away from children, even if they appear used or discharged.
- Never allow children to handle or play with batteries.
- Store spare batteries in a secure, locked location.
- Do not recharge, disassemble, crush, or expose batteries to heat or fire.

**Quick Configuration**

- Turn on the Smart Strip Light or open the app, ensuring Bluetooth is on and the Wi-Fi signal is strong and stable.
- The Smart Strip Light will display a blue breathing light when powered on.
- Remain on the homepage and locate the push notification, then click "Go to add".
- Select the Wi-Fi connection for the smart device, enter the Wi-Fi password, and click "Next". Wait for the pairing to complete. (Ensure the smart devices are on the same Wi-Fi network.)



**General Safety Warnings**

**1.Electrical Safety**

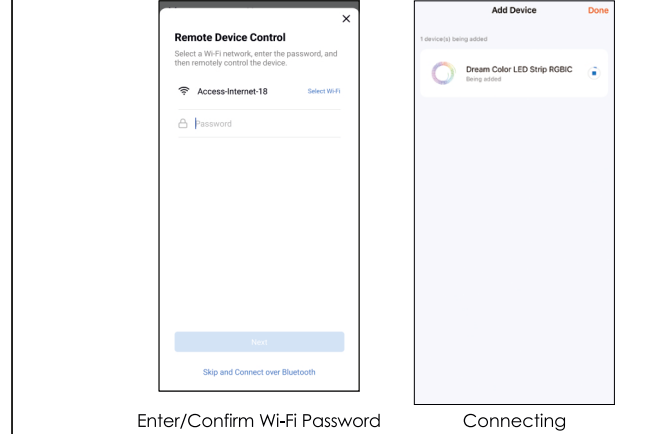
- Only use the provided power adapter with the specified voltage and current.
- Do not connect the LED strip to the mains power supply while it is still on the reel or coiled, as this can cause overheating and damage.
- Ensure the power adapter is disconnected from the mains supply before cutting or modifying the LED strip.
- Do not use the LED strip if it is visibly damaged, including the strip itself, the power adapter, or the controller.
- Do not attempt to repair the LED strip, power adapter, or controller yourself. Refer to a qualified technician for repairs.
- Keep the power adapter and controller dry. Do not use in wet or damp environments unless specifically rated for that purpose.
- Do not handle the power adapter with wet hands.
- Ensure the power cable is not damaged or pinched.
- If the product malfunctions, disconnect it from the power supply immediately.

**2.Fire Safety**

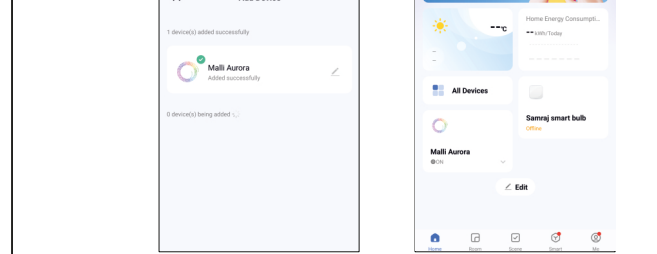
- Ensure the LED strip is installed on a non-flammable surface.
- Do not cover the LED strip or power adapter during use, as this can cause overheating.
- Do not use this product for critical applications where failure could result in injury or damage.
- Keep the LED strip away from heat sources and open flames.

**Control Device**

- Initial Pairing: After powering on, the blue light will breath to indicate it is ready for pairing.
- Signalling readiness for network pairing: Pairing mode lasts for 3 minutes.
- Reset Method: To reset the device, switch it on and off 5 times or press and hold the On/Off button on the controller for 5 seconds.
- The blue light will breath, indicating a successful reset and readiness to restart pairing.
- Successful Pairing: Once pairing is complete, the mixed RGB white light will remain on.
- Open the Smart Life app and operate as shown below.



The connection interface will appear. When the device is found, the Strip Light will stop the breathing effect, and the device initialisation will be completed.



**3.LED Safety**

- Do not stare directly at the LED lights for extended periods, as this may cause eye irritation.

**4.Installation Safety**

- Ensure the mounting surface is clean, dry, and stable before installing the LED strip.
- Use appropriate fixings and ensure they are suitable for the mounting surface. Incorrect installation may result in the strip falling.
- Do not install the LED strip where it may be subject to excessive bending or stress.
- Do not install the LED strip in a way that creates a trip hazard.

**5.Child Safety**

- Keep the LED strip and its accessories out of reach of young children. Small parts may be a choking hazard.
- This product is not a toy. Children should be supervised when near the LED strip.

**6.Usage Limitations**

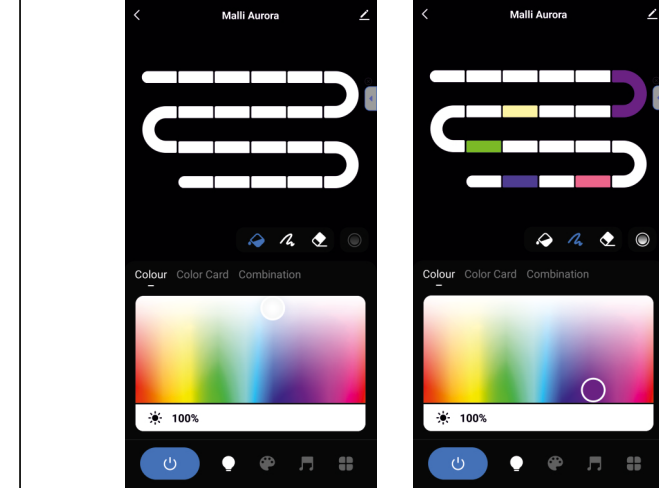
- This product is for indoor use only unless specifically stated otherwise.
- Do not use this product for critical applications where failure could result in injury or damage.

**Control Device**

- Initial Pairing: After powering on, the blue light will breath to indicate it is ready for pairing.
- Signalling readiness for network pairing: Pairing mode lasts for 3 minutes.
- Reset Method: To reset the device, switch it on and off 5 times or press and hold the On/Off button on the controller for 5 seconds.
- The blue light will breath, indicating a successful reset and readiness to restart pairing.
- Successful Pairing: Once pairing is complete, the mixed RGB white light will remain on.
- Open the Smart Life app and operate as shown below.

**1. Color Mode**

The app allows for DIY customisation of various static colours, and different colours can be set in sections.



**Flashing Light Warning**

**This product may emit flashing or strobe lighting effects when using certain modes (e.g. music sync, dynamic scenes, or app-controlled effects).**

**Warning for individuals with Photosensitive Epilepsy: Flashing lights may trigger seizures in people with photosensitive epilepsy. Use with caution or avoid dynamic modes if you are affected.**

**Do not place the LED strip in direct line of sight in sleeping areas or near very young children, as flashing lights may cause discomfort or distress.**

**When in public or shared spaces, ensure other individuals are aware if flashing modes are enabled.**

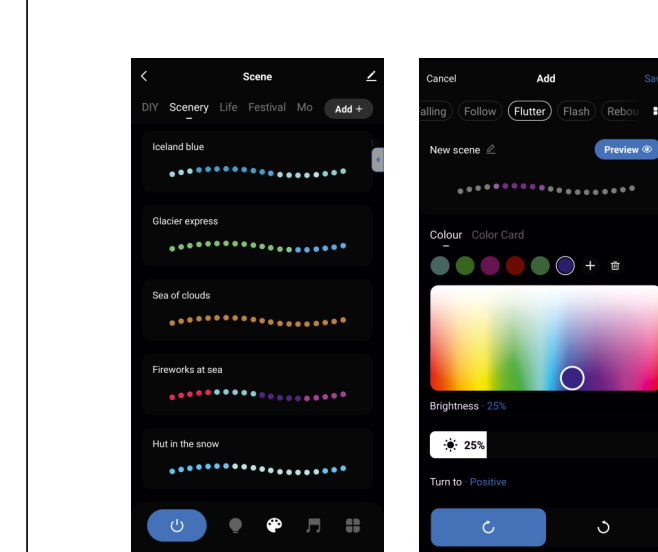
**If you experience discomfort, dizziness, or visual disturbances, discontinue use and consult a medical professional.**

**LED Strip Warnings**

- Always unroll the LED strip completely before powering it on to prevent overheating.
- Do not cut the LED strip except at the designated cutting marks.
- Incorrect cutting may damage the LED strip.
- Ensure proper polarity when connecting LED strip sections.

**2. Scene Mode**

Choose from a variety of scenes or create your own. The chasing effects of rainbow colours create an amazing display of lights dancing, twinkling and pulsing. These lights allow you to use them in many applications throughout your home.



**UK Regulatory Compliance**

**1.WEEE Directive**

This product should not be disposed of with general household waste. Please dispose of it responsibly at a designated collection point for recycling of electrical and electronic equipment.

**2.Battery Disposal**

Batteries should be disposed of separately from household waste. Please dispose of them responsibly at a designated collection point.

**Warranty**

This product is covered by a 12-month limited warranty from the date of purchase.

**The warranty covers:**

- Manufacturing defects in materials and workmanship
- Malfunctions under normal use conditions

**The warranty does not cover:**

- Damage due to misuse, abuse, or improper installation
- Modifications or unauthorised repairs
- Water damage (unless explicitly rated as waterproof)
- Normal wear and tear or cosmetic damage

To make a warranty claim, please retain your proof of purchase and contact our customer support.

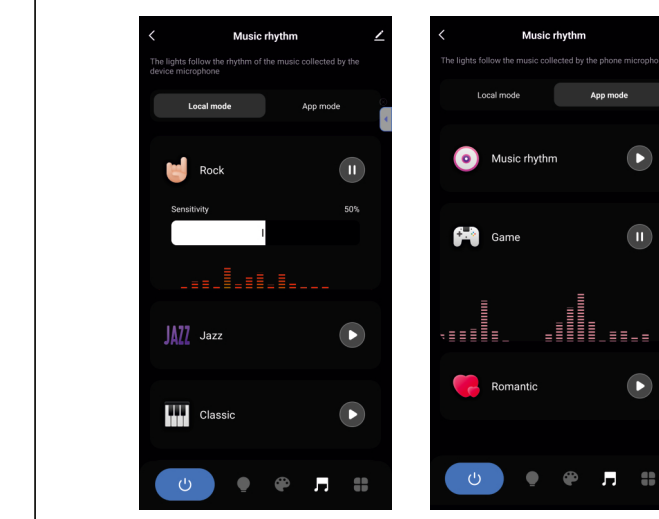
**3. Sync with Music**

**01) Local Mode**

The built-in advanced sensitive microphone creates a romantic, relaxing, and party atmosphere. Even if your smartphone is not close to the Strip Light, the light colours will change with the music's rhythm. Ideal for parties, holidays, watching films, or a romantic dinner.

**02) App Mode**

Choose music sync to match colour changes to the beat of music playing through your speakers.



**Samraj Technologies Limited**  
**2nd Floor Lowry Mill, Lees Street**  
**Manchester M27 6DB**  
**United Kingdom**

Email: [support@samraj.tech](mailto:support@samraj.tech)

For the most up-to-date instructions, please visit: [www.samraj.tech](http://www.samraj.tech)

